

*Safety Tech can be
Simple But Smart.*



PLOMO-500

The Latest SART Technology -

AMEC AIS SART (Search And Rescue Transmitter) PLOMO-500 complies with IEC 61097-14 specification. It is designed to be an alternative of Radar SART. PLOMO-500 can transmit GPS positions, Unique ID, COG and SOG in every minute once activated. It allows the rescue team to locate the survivors rapidly through the broadcasted AIS information and, ultimately, gives the lives a better chance to survive.

User-Friendly Operation -

AMEC PLOMO-500 is not just only the AIS SART itself but also a complete survival/distress solution of all other essential accessories of AIS SART. The solution comes in a survival bag and during emergency times, it is all what user needs to carry on his/her back. The setting operation is easy; it only requires 4 simple steps.

Backlit Panel and LED Indicator Integration -

AMEC PLOMO-500 has a backlit operational panel which allows users to see the buttons in dusky environment. Moreover, main unit has an over usage design to indicate if the battery life has been compromised due to excessive testing or it had been activated previously. Also, to increase the chance of survival, unit's LED indicator signals "SOS" distress message during activation for the survivors to be easily spotted by the rescue team.

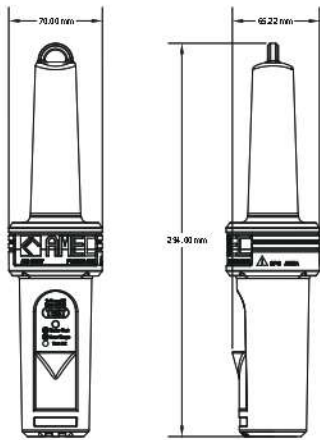
- ▶ Innovative AIS Technology
- ▶ Rugged and compact design
- ▶ Buoyant / floatable and waterproof to 10m
- ▶ Florescent backlight panel
- ▶ SOS LED light
- ▶ Easy to assemble and carry
- ▶ Minimum operating life - 96 hours

KEY FEATURES

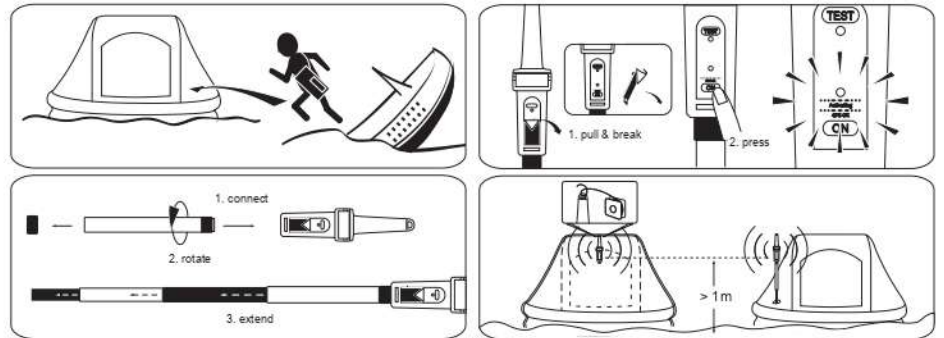
APPLICATIONS

- ▶ **SOLAS Vessel**
- ▶ **Commercial Boat**
- ▶ **Professional Boat**
- ▶ **Fishing Boat**

DIMENSIONS



INSTRUCTION DIAGRAM



SPECIFICATIONS

▶ APPLICABLE STANDARDS

IEC 61097-14
IEC 60945
IEC 61108-1
ITU-R M.1371
MSC.246(83)

▶ VHF TRANSMITTER

Operating Frequency	AIS 1, 161.975MHz AIS 2, 162.025MHz
Data Rate	9,600bps
Bandwidth	25 KHz
Output Power	1W EIRP
AIS Message Type	Message 1, Message 14
Modulation	GMSK
Antenna	Integrated by PCB

▶ GPS RECEIVER

Receiving Channels	48 channels
Acquisition Sensitivity	(-)-159 dBm
Tracking Sensitivity	(-)-159 dBm
Position Accuracy	< 2.5 m Autonomous & SBAS

▶ BATTERY

Type	Primary Lithium (not rechargeable)
Operating Life	96 hours minimum (activating)
Battery Life	5 years (storage and regular testing)
Service	Replaceable

▶ CARRY & MOUNTING

Carry Bag
Wall Mount

▶ ENVIRONMENTAL

Operating Temperature	-20°C~55°C
Storage Temperature	-30°C~70°C
Waterproof	Immersion to 10m
Buoyancy	Floats
Exterior Finish	Highly Visible Yellow
Compass Safe Distance	Standard Magnetic - 0.6 m Steering Magnetic - 0.4 m

▶ PHYSICAL

Max Diameter (Main Body)	70 mm (2.76 inch)
Length (Main Body)	300 mm (11.81 inch)
Weight (Main Body)	283 g (Battery included)
Length (Pole)	1050 mm (41.34 inch) (Extended)
Weight (Pole)	300 g
Weight (Storage Package)	1.08 kg

Note: Specifications are subject to change without prior notice.

